



**24 → 25.SET.2025 . EXPONOR
PORTO INTERNATIONAL FAIR
PORTUGAL**

DECORATING MANUAL

TABLE OF CONTENTS

STANDARD STANDS

ST.01 Stand 9 m ² (2 fronts)	3
ST.02 Stand 18 m ² (2 fronts).....	5

PREMIUM STANDS

TIMBER

SPM.01 2F Premium Timber 9 m ² (2 fronts)	7
SPM.02 2F Premium Timber 18 m ² (2 fronts).....	9
SPM.03 2F Premium Timber 24 m ² (2 fronts)	11
SPM.04 2F Premium Timber 36 m ² (2 fronts)	13
SPM.05 3F Premium Timber 36 m ² (3 fronts)	15

TIMBER PLUS

SPM.01P 3F Premium Timber 18m ² PLUS (3 fronts)	17
SPM.02P 3F Premium Timber 36m ² PLUS (3 fronts).....	19
SPM.03P 2F Premium Timber 42 m ² PLUS (2 fronts).....	21

FURNITURE

Showcases.....	24
Counters	24
Chairs and Stools.....	24
Reserved Area.....	24
Sofas	25
Tables	25
Others.....	25

CARPET

Colours	26
---------------	----

CONTACT	27
---------------	----



STANDARD STAND

STAND 9M² - 3X3 | 2 FRONTS | REF ST.01

INCLUDES

Structure: aluminium structure with white melamine panels.

Floor: Royal blue carpet, fireproof class M3

Furniture: 1 table and 2 chairs

Electrical installation: 3kw single-phase switchboard (16A circuit breaker, 220V) with 1 socket per stand

Lighting: 3 x 150W led floodlights

Company identification: **01** lettering with the exhibitor's name on cut-out self-adhesive vinyl (L2918mm x A236mm)

PRINTABLE AREA

02 Useful plate area L946mm x A2400mm (not included in the price)



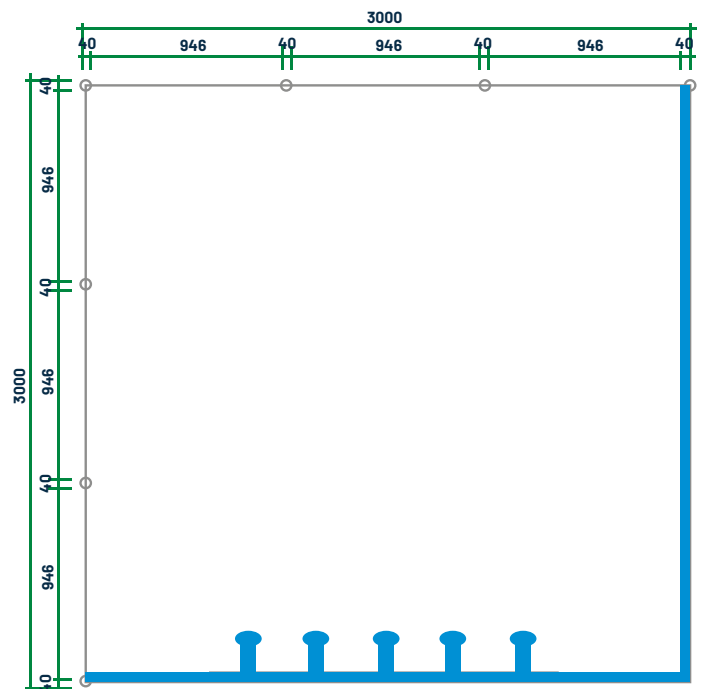
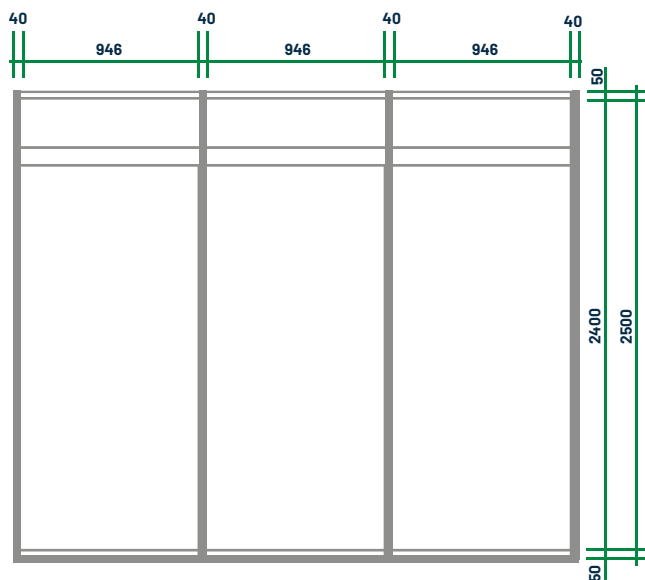
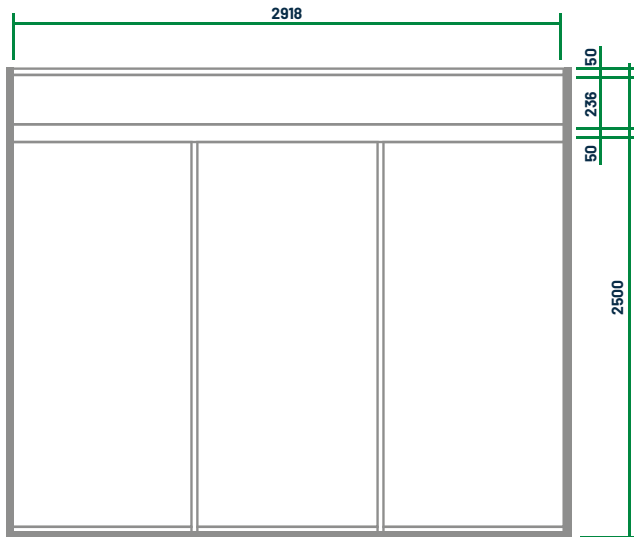
YOU CAN FIND THE TURN-KEY SOLUTION PRICE IN THE REGISTRATION FORM



www.enerh2o.com

STANDARD STAND

STAND 9M² - 3X3 | 2 FRONTS | REF ST.01



STANDARD STAND

STAND 18M² - 3X6 | 2 FRONTS | REF ST.02

INCLUDES

Structure: aluminium structure with white melamine panels.

Floor: alcatifa Royal blue carpet, fireproof class M3

Furniture: 1 table and 2 chairs

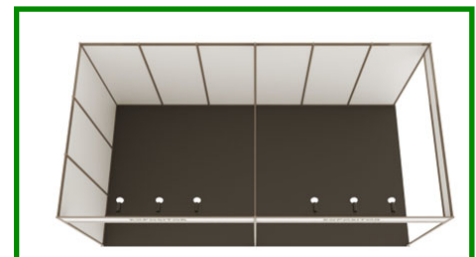
Electrical installation: 3kw single-phase switchboard (16A circuit breaker, 220V) with 1 socket per stand

Lighting: 6 projetores led de 150W

Company Identification: **01** lettering with the exhibitor's name on cut-out self-adhesive vinyl (L2918mm x A236mm)

PRINTABLE AREA

02 Useful plate area L946mm x A2400mm (not included in the price)



YOU CAN FIND THE TURN-KEY SOLUTION PRICE IN THE REGISTRATION FORM



www.enerh2o.com

STAND 18M² – 3X6 | **2 FRONTS** | REF ST.02



STAND PREMIUM

STAND 9M² - 3X3 | 2 FRONTS | REF SPM.01 2F

TIMBER

INCLUDES

Structure: natural-coloured wood, 2.5m high

Floor: Royal blue carpet, fireproof class M3

Furniture: 1 table and 3 chairs

Electrical installation: 3kw single-phase switchboard (16A circuit breaker, 220V) with 1 socket per stand

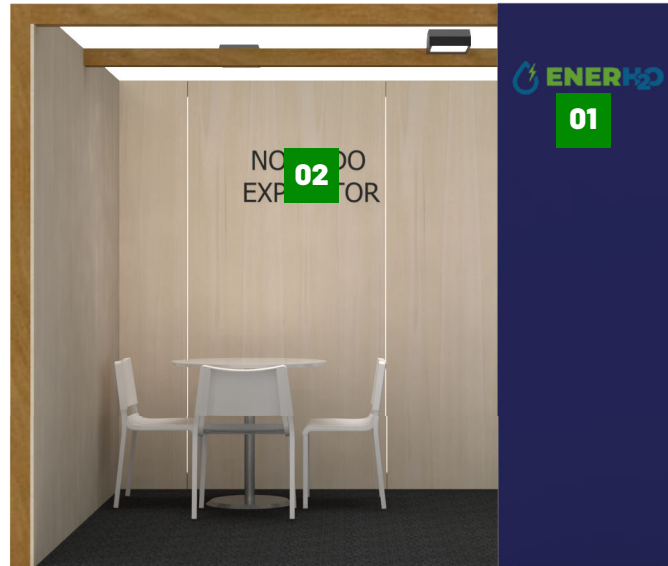
Lighting: 2 led floodlights

Company identification: **02** cut-out auto collocating vinyl logo (L800mm x A400mm)

PRINTABLE AREA

01 Useful plate area L800mm x A2500mm (não incluído no preço)

The final artwork and logo are supplied by the exhibitor



PRICE 1.100.00€ + VAT

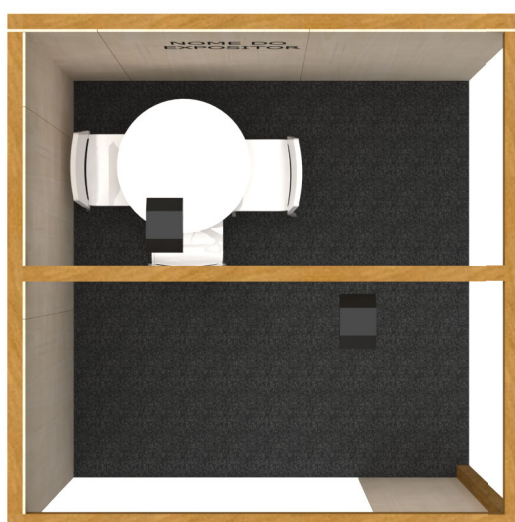


www.enerh2o.com

STAND PREMIUM

STAND 9M² - 3X3 | 2 FRONTS | REF SPM.01 2F

TIMBER



www.enerh2o.com

STAND PREMIUM

STAND 18M² - 6X3 | 2 FRONTS | REF SPM.02 2F

TIMBER

INCLUDES

Structure: natural-coloured wood, 2.5m high

Reserved: 1m x 1m with door

Floor: Royal blue carpet, fireproof class M3

Furniture: 1 counter, 1 table, and 3 chairs

Electrical installation: 3kw single-phase switchboard (16A circuit breaker, 220V) with 1 socket per stand

Lighting: 3 led floodlights

Company identification: **03** cut-out auto collocating vinyl logo (800mm x 400mm)

PRINTABLE AREA

01 Useful plate area L1010mm x A2500mm (not included in the price)

02 Useful counter area L800mm x A800mm (not included in the price)

You can find the turn-key solution price in the registration form



PRICE 1.850,00€ + VAT

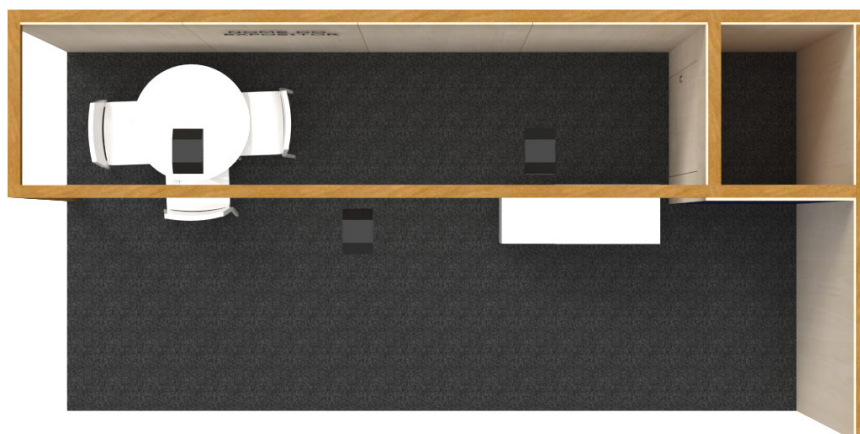


www.enerh2o.com

STAND PREMIUM

STAND 18M² - 6X3 | 2 FRONTS | REF SPM.02 2F

TIMBER



www.enerh2o.com

STAND PREMIUM

STAND 24M² - 6X4 | 2 FRONTS | REF SPM.03 2F

TIMBER

INCLUDES

Structure: natural-coloured wood, 2.5m high

Reserved: 1m x 1m with door

Floor: Royal blue carpet, fireproof class M3

Furniture: 1 counter, 1 table, and 3 chairs

Electrical installation: 3kw single-phase switchboard (16A circuit breaker, 220V) with 1 socket per stand

Lighting: 3 led floodlights

Company identification: **03** cut-out auto collocating vinyl logo (800mm x 400mm)

PRINTABLE AREA

01 Useful plate area L1010mm x A2500mm (not included in the price)

02 Useful counter area L800mm x A800mm (not included in the price)

The final artwork and logo are supplied by the exhibitor



PRICE 2.200,00€ + VAT

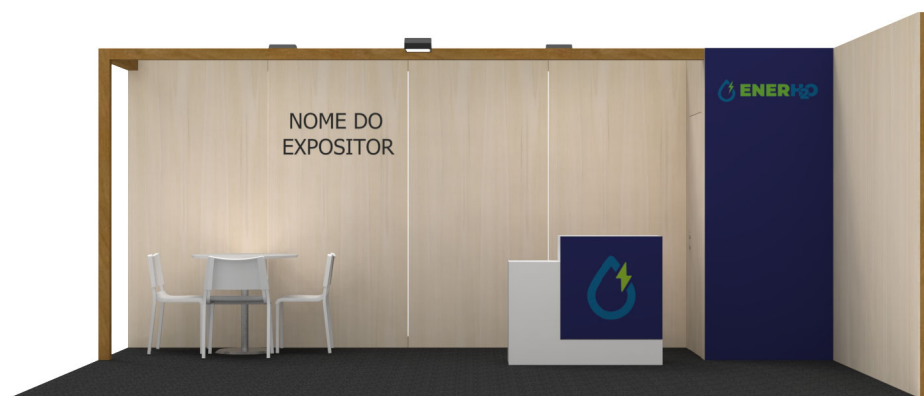
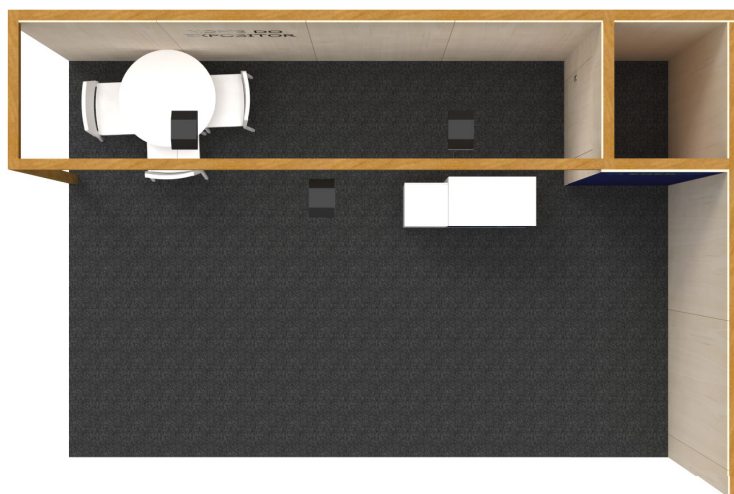


www.enerh2o.com

STAND PREMIUM

STAND 24M² - 6X4 | 2 FRONTS | REF SPM.03 2F

TIMBER



www.enerh2o.com

STAND PREMIUM

STAND 36M² - 6X6 | 2 FRONTS | REF SPM.04 2F

TIMBER

INCLUDES

Structure: natural-coloured wood, 2.5m high

Reserved: 1m x 1m with door

Floor: Royal blue carpet, fireproof class M3

Furniture: 1 counter, 1 table, and 3 chairs

Electrical installation: 3kw single-phase switchboard (16A circuit breaker, 220V) with 1 socket per stand

Lighting: 6 led floodlights

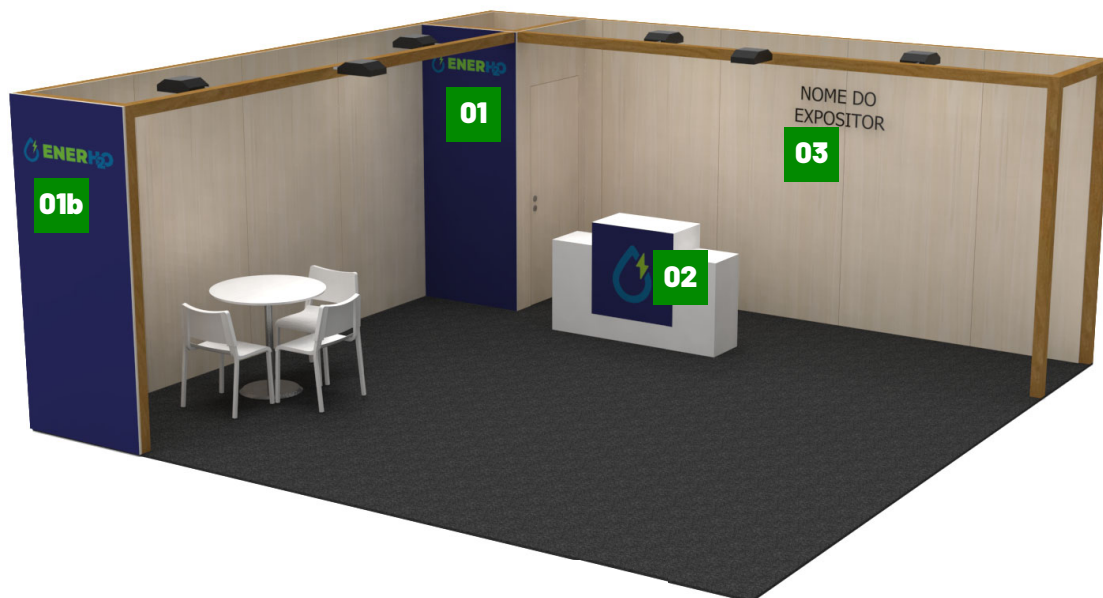
Company identification: **03** cut-out auto collocating vinyl logo (800mm x 400mm)

PRINTABLE AREA

01 Useful plate area L1010mm x A2500mm e **01b** L1130mm x A2500mm (not included in the price)

02 Useful counter area L800mm x A800mm (not included in the price)

The final artwork and logo are supplied by the exhibitor



PRICE 2.750,00€ + VAT

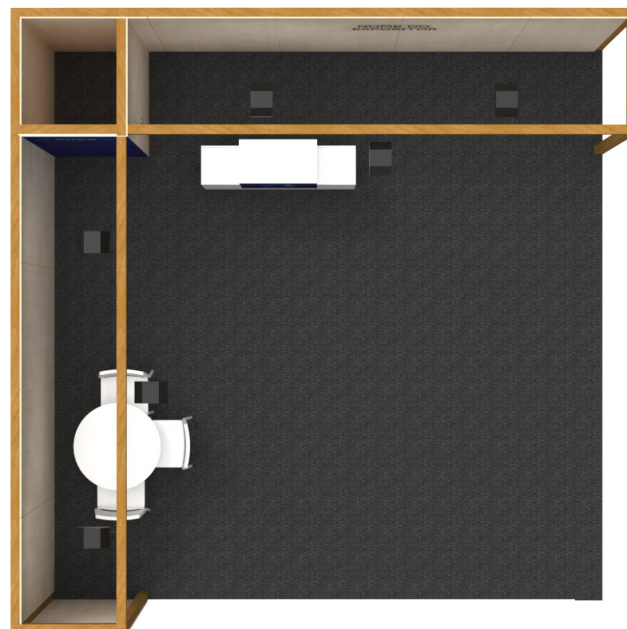


www.enerh2o.com

STAND PREMIUM

STAND 36M² - 6X6 | 2 FRONTS | REF SPM.04 2F

TIMBER



www.enerh2o.com

STAND PREMIUM

STAND 36M² - 6X6 | 3 FRONTS | REF SPM.05 3F

TIMBER

INCLUDES

Structure: natural-coloured wood, 2.5m high

Reserved: 1m x 1m with door

Floor: Royal blue carpet, fireproof class M3

Furniture: 1 counter, 1 table, and 3 chairs

Electrical installation: 3kw single-phase switchboard (16A circuit breaker, 220V) with 1 socket per stand

Lighting: 3 led floodlights

Company identification: **03** cut-out auto collocating vinyl logo (800mm x 400mm)

PRINTABLE AREA

01 Useful plate area L1130mm x A2500mm (not included in the price)

02 Useful counter area L800mm x A800mm (not included in the price)

The final artwork and logo are supplied by the exhibitor



For stands measuring 12m x 3m, please contact the organisation.

PREÇO 2.750,00€ + IVA

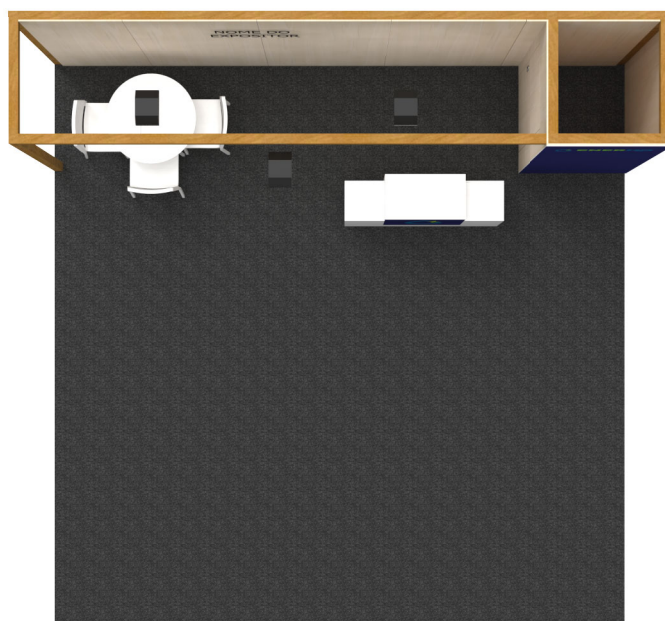


www.enerh2o.com

STAND PREMIUM

STAND 36M² - 6X6 | 3 FRONTS | REF SPM.05 3F

TIMBER



www.enerh2o.com

STAND PREMIUM PLUS

STAND 18M² - 6X3 | 3 FRONTS | REF SPM.01P 3F

TIMBER

INCLUDES

Structure: natural-coloured wood, 2.5m high

Reserved: 1m x 1m with door

Floor: Royal blue carpet, fireproof class M3

Furniture: 1 counter, 1 table, and 3 chairs

Electrical installation: 3kw single-phase switchboard (16A circuit breaker, 220V) with 1 socket per stand

Lighting: 3 led floodlights

Company identification: **03** cut-out auto collocating vinyl logo

PRINTABLE AREA

01 Useful plate area L1130mm x A2500mm (not included in the price)

02 Useful counter area L800mm x A800mm (not included in the price)

The final artwork and logo are supplied by the exhibitor



PREÇO 2.050,00€ + IVA

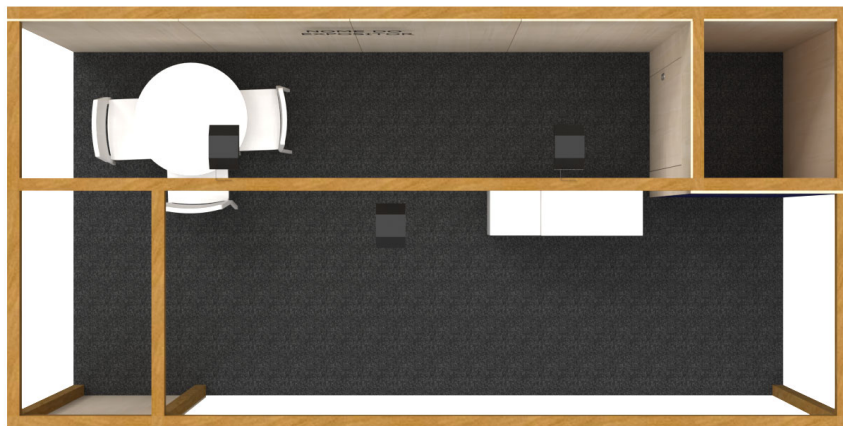


www.enerh2o.com

STAND PREMIUM PLUS

STAND 18M² - 6X3 | **3 FRONTS** | REF SPM.01P 2F

TIMBER



www.enerh2o.com

STAND PREMIUM PLUS

STAND 36M² - 6X6 | 3 FRONTS | REF SPM.02P 3F

TIMBER

INCLUDES

Structure: natural-coloured wood, 2.5m high

Reserved: 1m x 1m with door

Floor: Royal blue carpet, fireproof class M3

Furniture: 1 counter, 1 table, and 3 chairs

Electrical installation: 3kw single-phase switchboard (16A circuit breaker, 220V) with 1 socket per stand

Lighting: 7 led floodlights

Company identification: **03** cut-out auto collocating vinyl logo (800mm x 400mm)

PRINTABLE AREA

01 Useful plate area L1130mm x A2500mm e **01b** L1670mm x A2500mm (not included in the price)

02 Useful counter area L800mm x A800mm (not included in the price)

The final artwork and logo are supplied by the exhibitor



For stands measuring 12m x 3m, please contact the organisation.

PRICE 3.050,00€ + VAT

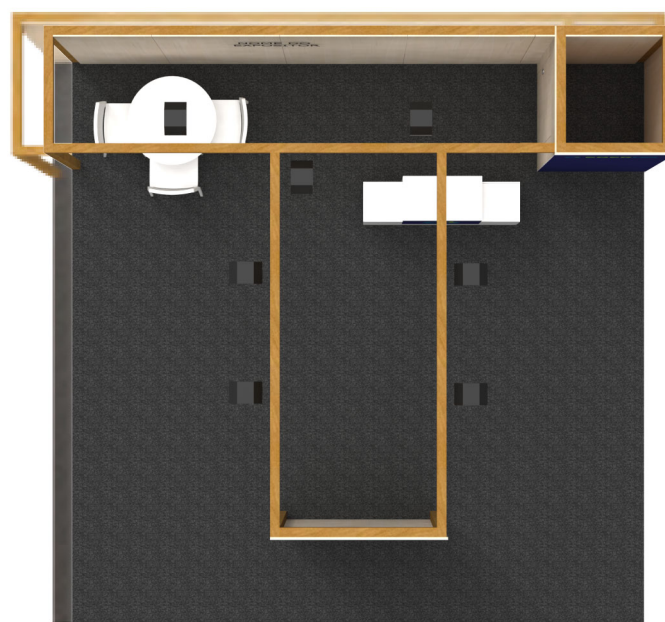
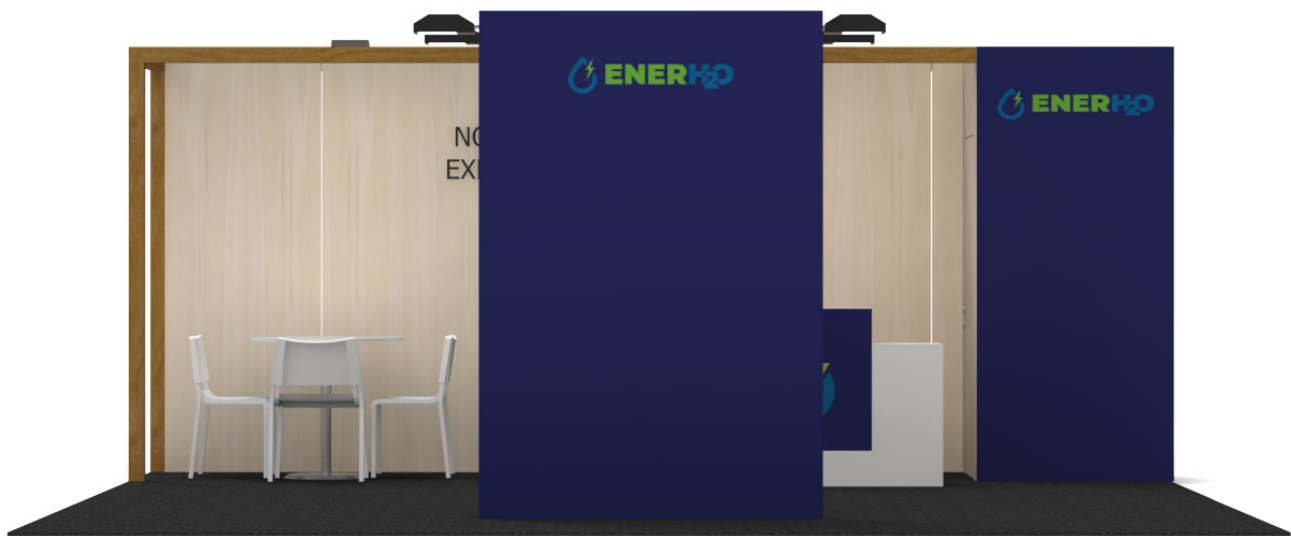


www.enerh2o.com

STAND PREMIUM PLUS

STAND 36M² - 6X6 | 3 FRONTS | REF SPM.02P 3F

TIMBER



www.enerh2o.com

STAND PREMIUM PLUS

STAND 42M² - 6X7 | 2 FRONTS | REF SPM.03P 2F

TIMBER

INCLUDES

Structure: natural-coloured wood, 2.5m high

Reserved: 2m x 1m with door

Floor: Royal blue carpet, fireproof class M3

Furniture: 1 counter, 1 table, and 3 chairs

Electrical installation: 3kw single-phase switchboard (16A circuit breaker, 220V) with 1 socket per stand

Lighting: 8 led floodlights

Company identification: **03** cut-out auto collocating vinyl logo (800mm x 800mm)

PRINTABLE AREA

01 Useful plate area L2400mm x A2500mm **01b** L1130mm x A2500mm **01c** L1220mm x A2500mm
(not included in the price)

02 Useful counter area L800mm x A800mm (not included in the price)

The final artwork and logo are supplied by the exhibitor



PRICE 3.650,00€ + VAT

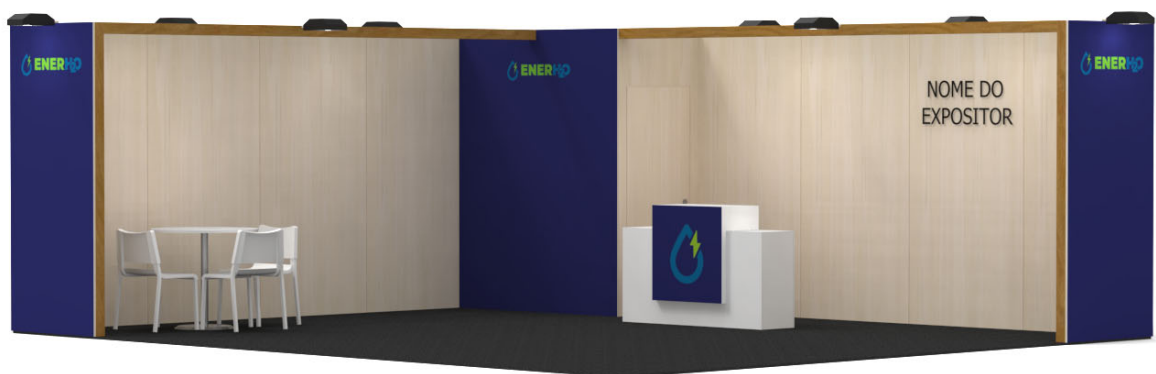
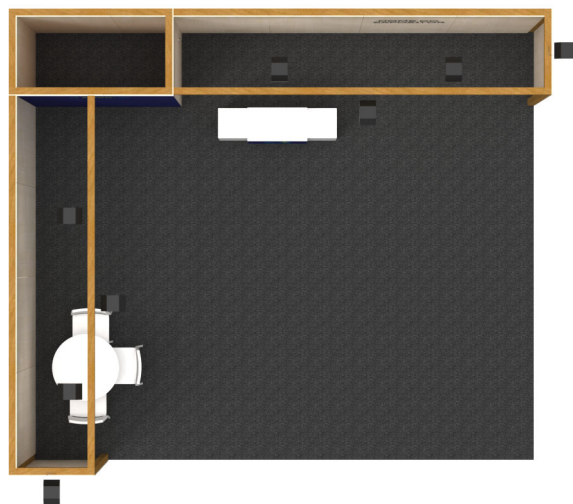


www.enerh2o.com

STAND PREMIUM PLUS

STAND 42M² - 6X7 | 2 FRONTS | REF SPM.03P 2F

TIMBER



www.enerh2o.com

OTHER STANDS



FOR MORE INFORMATION,
PLEASE CONTACT THE ORGANISATION

expositor@enerh2o.com



www.enerh2o.com

FURNITURE

SHOWCASES



M.VT.82.B

LARG. 500
PROF. 500
ALT. 2000



M.VT.00.B

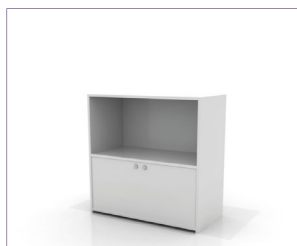
LARG. 430
PROF. 370
ALT. 1630

COUNTER



M.BP.80.B

LARG. 940
PROF. 365
ALT. 995



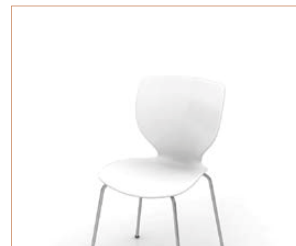
M.BP.02.B

LARG. 1000
PROF. 500
ALT. 1000



M.BA.02.B

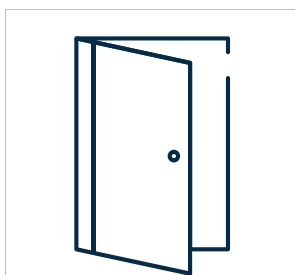
LARG. 400
PROF. 400
ALT. 970



M CS 02 B

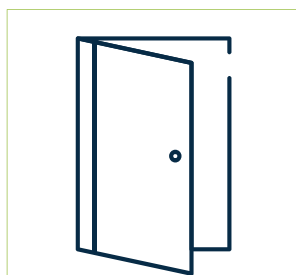
LARG. 440
PROF. 420
ALT. 870

STORAGE AREA



M.RES.01

1mx1m



M.RES.02

2mx1m



M.RES.03

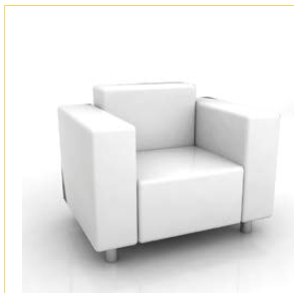
2mx2m



www.enerh2o.com

FURNITURE

SOFÁS » SOFAS



M.S1.00.B

LARG.	PROF.	ALT.
940	760	660



M.S1.00.P

LARG.	PROF.	ALT.
940	760	660



M.S2.00.B

LARG.	PROF.	ALT.
1600	760	660



M.S2.00.P

LARG.	PROF.	ALT.
1600	760	660

MESAS» TABLES



M.MC.03.B

LARG.	PROF.	ALT.
680	680	740



M.MA.01.B

LARG.	PROF.	ALT.
680	680	1100

OUTRO » OTHERS



M.CX.00.F

LARG.	PROF.	ALT.
290	290	300



EL.FR.01.B



M.PF.00.X

LARG.	PROF.	ALT.
263	348	1400



M BG 00 C

LARG.	PROF.	ALT.
300	300	1840

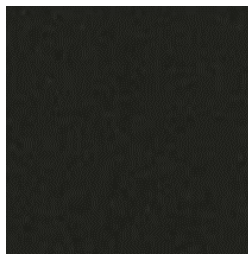


www.enerh2o.com

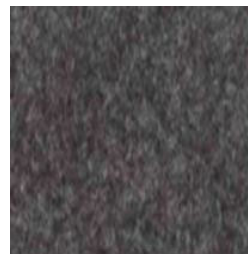
CARPET

The carpet in the corridors will be Mousy Grey and the stands will be Royal Blue.

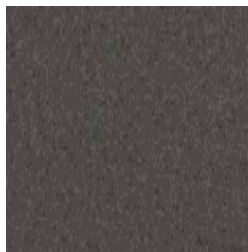
Changing the colour will incur an additional charge of 7.5€/m²



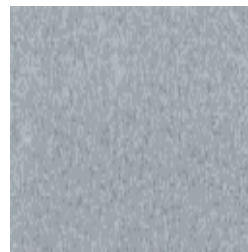
Black



Anthracite



Graphite



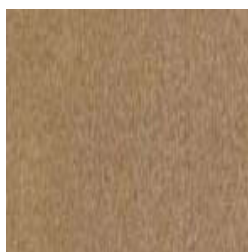
Mousy Grey



Marine



Royal blue



Buff Coloured



Tomato Red




Orange




Apple Green




CONTACT

 +34 93 238 68 68

 + 351 96 630 47 10

 expositor@enerh2o.com

 www.enerh2o.com

